

## Information Security Awareness Program

This document is part of a collection of documents that make up the Information Security Awareness Program. The following is a link to the main [Information Security Awareness Program](#) document.

### Networks

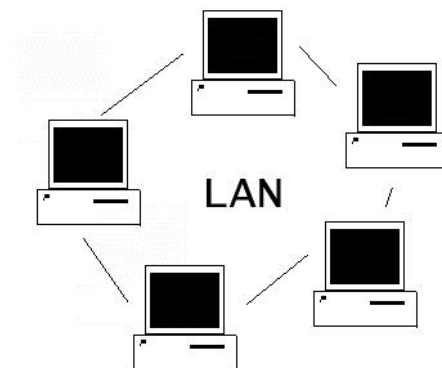
A computer network consists of two or more computers that are linked in order to share resources or allow electronic communication. These resources include office phones, printers, files, applications, etc., and electronic communication includes email, instant messaging, etc. The computers on a network may be linked through cables, telephone lines, radio waves, satellites, or infrared light beams. In general, there are two types of networks:

- Local-Area Network (LAN)
- Wide-Area Network (WAN)

These types of networks can be connected either wired or wirelessly.

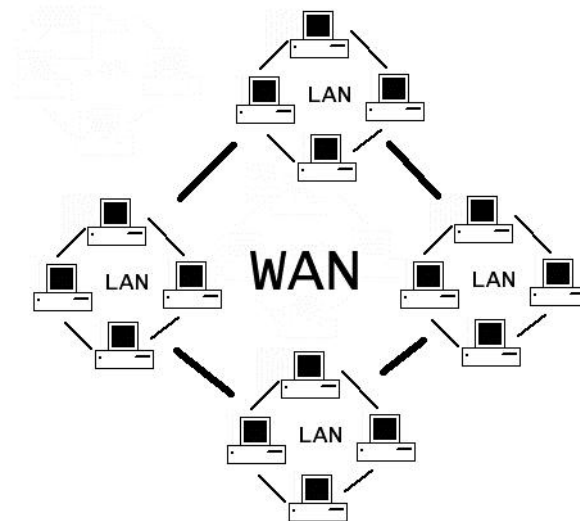
### Local-Area Network

A local area network (LAN) is a computer network that connects computers in a limited area such as a home, computer lab, building, or campus. The defining characteristics of LANs include higher data-transfer rates, smaller geographic area, and lack of a need for leased telecommunication lines.



## Wide-Area Network

A wide area network (WAN) is a computer network that covers a broad area. This type of network links across local, regional, national boundaries. Organizations utilize WANs to relay data among employees, clients, buyers, and suppliers from various geographical locations. This mode of telecommunication allows a business to effectively carry out its daily function regardless of the physical location. A characteristic of WAN's is they often contain multiple local area networks (LANs). See Local-Area Network above.



## Network Devices

Network devices are hardware that connects to any of the College's networks. This includes office phones, College-owned laptops & desktops & iPads, printers, security cameras, personally owned devices, and many others.

## Cincinnati State Networks

The college has several networks. These networks provide access to systems and sensitive college data and must be kept secure. The guest wireless is open to the public with no authentication required and provides access to the Internet only. Other college networks include:

- Faculty/Staff Network (College-owned equipment only)
- PCI Network (Highly secured systems)
- Student Network (College-owned equipment only)
- Faculty/Staff Wireless Network (College-owned equipment only)
- Student Wireless Network
- Guest Wireless Network